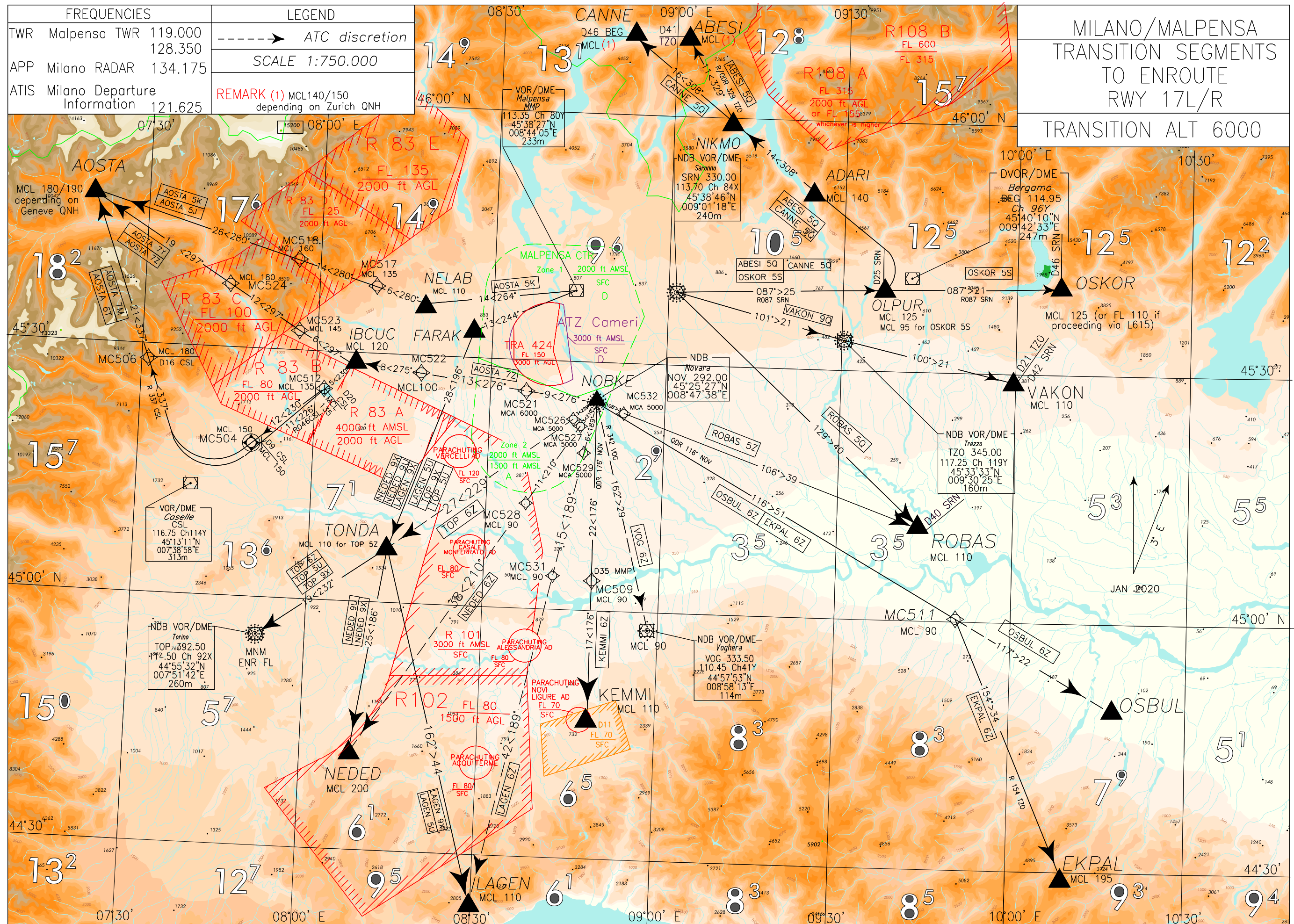


CHANGE: LOGDI 6Z, PIKOT 5Z WITHDRAWN – ROBAS 5Q/5Z IMPLEMENTED – OSKOR 5Q MODIFIED AND OSKOR 5S –
MAGNETIC VARIATION UPDATED

**TRANSITION SEGMENTS TO ENROUTE DESCRIPTION
RWY 17L/R**

REMARK

The below coding tables, limited to Conventional Navigation, are provided on trial basis and for data coding purposes only.

ABESI 5Q

SRN VOR proceed on TR 087° (RDL/QDR 087 SRN VOR NDB) to OLPUR (RDL/QDR 087/25 NM SRN VOR NDB/DME), then turn left until join and follow RDL 308 BEG VOR (TR 308°) and proceed via ADARI (RDL 308/16 NM BEG VOR/DME) – NIKMO (RDL 308/30 NM BEG VOR/DME), then turn right until join and follow RDL/QDR 329 TZO VOR NDB (TR 329°) direct to ABESI (RDL/QDR 329/41 NM TZO VOR NDB/DME).

MCL: OLPUR, FL125; ADARI, FL140; ABESI *

Path Terminator	Waypoint Name	Fly Over	Course °M(°T)	Magnetic Variation	Distance (NM)	Turn Direction	Altitude (ft)	Speed Limit (kt)	Navigation Specification
IF	SRN	-	-	-	-	-	-	-	RNAV 1
TF	OLPUR	Y	087 (089.5)	-	25.1	-	FL125	-	RNAV 1
TF	ADARI	-	308 (310.9)	3°	-	L	FL140	-	RNAV 1
TF	NIKMO	-	308 (310.8)	-	13.6	-	-	-	RNAV 1
TF	ABESI	-	329 (331.8)	-	11.4	-	FL140/150*	-	RNAV 1

* FL140/150 depending on Zurich QNH.

AOSTA 7M

Path Terminator	Waypoint Name	Fly Over	Course °M(°T)	Magnetic Variation	Distance (NM)	Turn Direction	Altitude (ft)	Speed Limit (kt)	Navigation Specification
IF	IBCUC	-	-	-	-	-	FL120	-	RNAV1
TF	MC512	-	230 (232.7)	-	5.0	-	FL135	-	RNAV1
TF	MC504	Y	230 (232.7)	-	12.0	-	FL150	-	RNAV1
CF	MC506	-	337 (339.8)	3°	-	R	FL180	-	RNAV1
TF	AOSTA	-	337 (339.8)	-	20.9	-	FL180/190*	-	RNAV1

* FL180/190 depending on Geneva QNH.

AOSTA 7Y

Path Terminator	Waypoint Name	Fly Over	Course °M(°T)	Magnetic Variation	Distance (NM)	Turn Direction	Altitude (ft)	Speed Limit (kt)	Navigation Specification
IF	IBCUC	-	-	-	-	-	FL120	-	RNAV1
TF	MC523	-	297 (300.0)	-	6.0	-	FL145	-	RNAV1
TF	MC524	-	297 (299.9)	-	12.0	-	FL180	-	RNAV1
TF	AOSTA	-	297 (299.7)	-	18.6	-	FL180/190*	-	RNAV1

* FL180/190 depending on Geneva QNH.

AOSTA 5K

Path Terminator	Waypoint Name	Fly Over	Course °M(°T)	Magnetic Variation	Distance (NM)	Turn Direction	Altitude (ft)	Speed Limit (kt)	Navigation Specification
IF	MMP	-	-	-	-	-	-	-	RNAV1
TF	NELAB	-	264 (267.0)	-	13.8	-	FL110	-	RNAV1
TF	MC517	-	280 (283.1)	-	6.0	-	FL135	-	RNAV1
TF	MC518	-	280 (283.0)	-	14.0	-	FL160	-	RNAV1
TF	AOSTA	-	280 (282.8)	-	25.7	-	FL 180/ 190**	-	RNAV1

* FL 180/190 depending on Geneve QNH

AOSTA 5J

Path Terminator	Waypoint Name	Fly Over	Course °M(°T)	Magnetic Variation	Distance (NM)	Turn Direction	Altitude (ft)	Speed Limit (kt)	Navigation Specification
IF	NELAB	-	-	-	-	-	FL110	-	RNAV1
TF	MC517	-	280 (283.1)	-	6.0	-	FL135	-	RNAV1
TF	MC518	-	280 (283.0)	-	14.0	-	FL160	-	RNAV1
TF	AOSTA	-	280 (282.8)	-	25.7	-	FL 180/ 190*	-	RNAV1

* FL 180/190 depending on Geneve QNH

AOSTA 6T

From IBCUC proceed on TR 226° (RDL 046 CSL VOR), at 9NM CSL DME turn right until joining RDL 337 CSL VOR to AOSTA (RDL 337/37 NM CSL VOR/DME).

MCL: IBCUC, FL120; RDL046/20NM CSL VOR/DME, FL135; RDL046/9NM CSL VOR/DME FL150; RDL 337/16NM CSL VOR/DME, FL 180; AOSTA *

* MCL FL180/190 depending on Geneve QNH

AOSTA 7Z (ATC discretion)

Path Terminator	Waypoint Name	Fly Over	Course °M(°T)	Magnetic Variation	Distance (NM)	Turn Direction	Altitude (ft)	Speed Limit (kt)	Navigation Specification
IF	NOBKE	-	-	-	-	-	3000	-	RNAV1
TF	MC521	-	276 (278.4)	-	8.6	-	6000	-	RNAV1
TF	MC522	-	276 (278.3)	-	13.2	-	FL100	-	RNAV1
TF	IBCUC	-	275 (278.1)	-	7.8	-	FL120	-	RNAV1
TF	MC523	-	297 (300.0)	-	6.0	-	FL145	-	RNAV1
TF	MC524	-	297 (299.9)	-	12.0	-	FL180	-	RNAV1
TF	AOSTA	-	297 (299.7)	-	18.6	-	FL180/190*	-	RNAV1

* FL180/190 depending on Geneve QNH

CANNE 5Q

SRN VOR /DME proceed on TR 087° (RDL/QDR 087 SRN VOR NDB) to OLPUR (RDL/QDR 087/25 NM SRN VOR NDB/DME), then turn left until join and follow RDL 308 BEG VOR (TR 308°) and proceed via ADARI (RDL 308/16 NM BEG VOR/DME) – NIKMO (RDL 308/30 NM BEG VOR/DME) - CANNE (RDL 308/46 NM BEG VOR/DME).

MCL: OLPUR, FL125; ADARI, FL140; CANNE *

Path Terminator	Waypoint Name	Fly Over	Course °M(°T)	Magnetic Variation	Distance (NM)	Turn Direction	Altitude (ft)	Speed Limit (kt)	Navigation Specification
IF	SRN	-	-	-	-	-	-	-	RNAV 1
TF	OLPUR	Y	087 (089.5)	-	25.1	-	FL125	-	RNAV 1
TF	ADARI	-	308 (310.9)	3°	-	L	FL140	-	RNAV 1
TF	NIKMO	-	308 (310.8)	-	13.6	-	-	-	RNAV 1
TF	CANNE	-	308 (310.7)	-	16.0	-	FL140/150*	-	RNAV 1

* FL140/150 depending on Zurich QNH.

EKPAL 6Z

NOBKE proceed on TR 116° (QDR 116° NOV NDB) to MC511 (INT RDL 153 TZO/QDR 116° NOV NDB), then turn right to join and follow RDL 154 TZO VOR direct to EKPAL (RDL 154/70 NM TZO VOR/DME).

MCL: MC511 FL 90; EKPAL FL 195

Path Terminator	Waypoint Name	Fly Over	Course °M(°T)	Magnetic Variation	Distance (NM)	Turn Direction	Altitude (ft)	Speed Limit (kt)	Navigation Specification
IF	NOBKE	-	-	-	-	-	-	-	RNAV 1
TF	MC511	-	116 (119.2)	-	51.3	-	FL90	-	RNAV 1
TF	EKPAL	-	154 (156.6)	-	34.0	-	FL195	-	RNAV 1

KEMMI 6Z

NOBKE proceed on TR 176° (QDR 176° NOV NDB) via MC509 (QDR 176° NOV NDB/35 NM MMP DME) direct to KEMMI (QDR 176° NOV NDB/52 NM MMP DME).

MCL: MC509, FL 90; KEMMI, FL110

Path Terminator	Waypoint Name	Fly Over	Course °M(°T)	Magnetic Variation	Distance (NM)	Turn Direction	Altitude (ft)	Speed Limit (kt)	Navigation Specification
IF	NOBKE	-	-	-	-	-	-	-	RNAV 1
TF	MC509	-	176 (178.9)	-	21.9	-	FL90	-	RNAV 1
TF	KEMMI	-	176 (178.8)	-	17.1	-	FL110	-	RNAV 1

LAGEN 9X

Path Terminator	Waypoint Name	Fly Over	Course °M(°T)	Magnetic Variation	Distance (NM)	Turn Direction	Altitude (ft)	Speed Limit (kt)	Navigation Specification
IF	MMP	-	-	-	-	-	-	-	RNAV 1
TF	FARAK	-	244 (246.8)	-	13.1	-	-	-	RNAV 1
TF	TONDA	-	196 (199.2)	-	28.3	-	-	-	RNAV 1
TF	LAGEN	-	162 (164.9)	-	44.4	-	FL110	-	RNAV 1

LAGEN 5U

Path Terminator	Waypoint Name	Fly Over	Course °M(°T)	Magnetic Variation	Distance (NM)	Turn Direction	Altitude (ft)	Speed Limit (kt)	Navigation Specification
IF	FARAK	-	-	-	-	-	-	-	RNAV 1
TF	TONDA	-	196 (199.2)	-	28.3	-	-	-	RNAV 1
TF	LAGEN	-	162 (164.9)	-	44.4	-	FL110	-	RNAV 1

LAGEN 6Z (ATC discretion)

Path Terminator	Waypoint Name	Fly Over	Course °M(°T)	Magnetic Variation	Distance (NM)	Turn Direction	Altitude (ft)	Speed Limit (kt)	Navigation Specification
IF	NOBKE	-	-	-	-	-	3000FT	-	RNAV1
TF	MC529	-	189 (191.6)	-	6.3	-	5000FT	-	RNAV1
TF	MC531	-	189 (191.6)	-	14.9	-	FL90	-	RNAV1
TF	LAGEN	-	189 (191.6)	-	41.8	-	FL110	-	RNAV1

NEDED 9X

Path Terminator	Waypoint Name	Fly Over	Course °M(°T)	Magnetic Variation	Distance (NM)	Turn Direction	Altitude (ft)	Speed Limit (kt)	Navigation Specification
IF	MMP	-	-	-	-	-	-	-	RNAV 1
TF	FARAK	-	244 (246.8)	-	13.1	-	-	-	RNAV 1
TF	TONDA	-	196 (199.2)	-	28.3	-	-	-	RNAV 1
TF	NEDED	-	186 (188.7)	-	25.2	-	FL200	-	RNAV 1

NEDED 9U

Path Terminator	Waypoint Name	Fly Over	Course °M(°T)	Magnetic Variation	Distance (NM)	Turn Direction	Altitude (ft)	Speed Limit (kt)	Navigation Specification
IF	FARAK	-	-	-	-	-	-	-	RNAV 1
TF	TONDA	-	196 (199.2)	-	28.3	-	-	-	RNAV 1
TF	NEDED	-	186 (188.7)	-	25.2	-	FL200	-	RNAV 1

NEDED 6Z (ATC discretion)

Path Terminator	Waypoint Name	Fly Over	Course °M(°T)	Magnetic Variation	Distance (NM)	Turn Direction	Altitude (ft)	Speed Limit (kt)	Navigation Specification
IF	NOBKE	-	-	-	-	-	3000FT	-	RNAV1
TF	MC527	-	210 (212.6)	-	3.0	-	5000FT	-	RNAV1
TF	MC528	-	210 (212.6)	-	11.0	-	FL90	-	RNAV1
TF	NEDED	-	210 (212.5)	-	37.9	-	FL200	-	RNAV1

OSBUL 6Z (ATC discretion)

NOBKE proceed on TR 116° (QDR 116° NOV NDB) via MC511 (RDL 154 TZO VOR/ QDR 116° NOV NDB) direct to OSBUL.

MCL: MC511, FL 90

Path Terminator	Waypoint Identifier	Fly Over	Course °M(°T)	Magnetic Variation	Distance (NM)	Turn Direction	Altitude (ft)	Speed Limit (IAS)	Navigation Specification
IF	NOBKE	-	-	-	-	-	-	-	RNAV 1
TF	MC511	-	116 (119.0)	-	51.3	-	FL90	-	RNAV 1
TF	OSBUL	-	117 (119.8)	-	21.9	-	-	-	RNAV 1

OSKOR 5S

SRN VOR NDB proceed on TR 087° (RDL 087 SRN VOR) to OLPUR, then continue on TR 087° (RDL 087 SRN VOR) direct to OSKOR (RDL 087/46 NM SRN VOR/DME).

MCL: OLPUR, FL95; OSKOR, FL125/110*

Path Terminator	Waypoint Identifier	Fly Over	Course °M(°T)	Magnetic Variation	Distance (NM)	Turn Direction	Altitude (ft)	Speed Limit (IAS)	Navigation Specification
IF	SRN	-	-	-	-	-	-	-	RNAV 1
TF	OLPUR	-	087 (089.5)	-	25.1	-	FL95	-	RNAV 1
TF	OSKOR	-	087 (089.7)	-	20.9	-	FL125/FL110*	-	RNAV 1

* FL125 (or FL110 if proceeding via L615)

ROBAS 5Q

SRN VOR NDB proceed on TR129° (RDL/QDR 129° SRN VOR NDB) to ROBAS (RDL/QDR 129/40 NM SRN VOR NDB/DME).

MCL: ROBAS, FL110

Path Terminator	Waypoint Identifier	Fly Over	Course °M(°T)	Magnetic Variation	Distance (NM)	Turn Direction	Altitude (ft)	Speed Limit (IAS)	Navigation Specification
IF	SRN	-	-	-	-	-	-	-	RNAV 1
TF	ROBAS	-	129 (132.1)	-	40.3	-	FL110	-	RNAV 1

ROBAS 5Z

Path Terminator	Waypoint Identifier	Fly Over	Course °M(°T)	Magnetic Variation	Distance (NM)	Turn Direction	Altitude (ft)	Speed Limit (IAS)	Navigation Specification
IF	NOBKE	-	-	-	-	-	-	-	RNAV 1
TF	MC532	-	106 (109.0)	-	3.0	-	5000	-	RNAV 1
TF	ROBAS	-	106 (109.0)	-	38.8	-	FL110	-	RNAV 1

TOP 9X

Path Terminator	Waypoint Identifier	Fly Over	Course °M(°T)	Magnetic Variation	Distance (NM)	Turn Direction	Altitude (ft)	Speed Limit (kt)	Navigation Specification
IF	MMP	-	-	-	-	-	-	-	RNAV 1
TF	FARAK	-	244 (246.8)	-	13.1	-	-	-	RNAV 1
TF	TONDA	-	196 (199.2)	-	28.3	-	-	-	RNAV 1
TF	TOP	-	232 (235.0)	-	19.2	-	MNM ENR FL *	-	RNAV 1

* according to the next ATS route segment

TOP 5U

Path Terminator	Waypoint Identifier	Fly Over	Course °M(°T)	Magnetic Variation	Distance (NM)	Turn Direction	Altitude (ft)	Speed Limit (kt)	Navigation Specification
IF	FARAK	-	-	-	-	-	-	-	RNAV1
TF	TONDA	-	196 (199.2)	-	28.3	-	-	-	RNAV1
TF	TOP	-	232 (235.0)	-	19.2	-	MNM ENR FL *	-	RNAV1

*according to the next ATS route segment

TOP 6Z (ATC discretion)

Path Terminator	Waypoint Name	Fly Over	Course °M(°T)	Magnetic Variation	Distance (NM)	Turn Direction	Altitude (ft)	Speed Limit (kt)	Navigation Specification
IF	NOBKE	-	-	-	-	-	3000FT	-	RNAV1
TF	MC526	-	229 (231.9)	-	3.0	-	5000FT	-	RNAV1
TF	TONDA	-	229 (231.9)	-	27.4	-	FL110	-	RNAV1
TF	TOP	-	232 (235.0)	-	19.2	-	MNM ENR FL *	-	RNAV1

*according to the next ATS route segment

VAKON 9Q

SRN VOR proceed on TR 101° (RDL/QDR 101 SRN VOR NDB or RDL/QDR 282 TZO VOR NDB) to TZO VOR NDB, then continue on TR 100° (RDL/QDR 100° TZO VOR NDB or RDL 101 SRN VOR) direct to VAKON (RDL/QDR 100/21 NM TZO VOR NDB/DME or RDL 101/42 SRN VOR/DME).

MCL: VAKON, FL110

Path Terminator	Waypoint Identifier	Fly Over	Course °M(°T)	Magnetic Variation	Distance (NM)	Turn Direction	Altitude (ft)	Speed Limit (kt)	Navigation Specification
IF	SRN	-	-	-	-	-	-	-	RNAV 1
TF	TZO	-	101 (104.1)	-	21.1	-	-	-	RNAV 1
TF	VAKON	-	100 (103.0)	-	21.4	-	FL110	-	RNAV 1

VOG 6Z (ATC discretion)

NOBKE proceed on TR 162° (RDL/QDR 342 VOG VOR NDB) direct to VOG VOR NDB.

MCL: VOG VOR NDB, FL90

Path Terminator	Waypoint Identifier	Fly Over	Course °M(°T)	Magnetic Variation	Distance (NM)	Turn Direction	Altitude (ft)	Speed Limit (kt)	Navigation Specification
IF	NOBKE	-	-	-	-	-	-	-	RNAV 1
TF	VOG	-	162 (164.8)	-	28.6	-	FL90	-	RNAV 1

WAYPOINT LIST

Waypoint Identifier	Coordinates
MC504	45°19'20.19" N 007°46'50.95" E
MC506	45°28'10.75" N 007°31'04.23" E
MC509	45°03'34.67" N 008°48'12.69" E
MC511	45°00'14.63" N 009°50'55.83" E
MC512	45°26'37.34" N 008°00'22.54" E
MC517	45°39'03.44" N 008°16'04.02" E
MC518	45°42'10.68" N 007°56'38.38" E
MC521	45°26'41.67" N 008°35'33.53" E
MC522	45°28'33.88" N 008°17'02.91" E
MC523	45°32'39.02" N 007°58'38.15" E
MC524	45°38'36.98" N 007°43'48.21" E
MC526	45°23'35.74" N 008°44'16.82" E
MC527	45°22'55.26" N 008°45'20.17" E
MC528	45°13'38.16" N 008°36'56.78" E
MC529	45°19'17.31" N 008°45'49.91" E
MC531	45°04'40.08" N 008°41'35.42" E
MC532	45°24'28.37" N 008°51'39.54" E